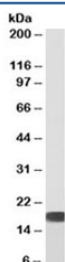


SOD Antibody [Biotin Conjugate] (R36046BTN)

Catalog No.	Formulation	Size
R36046BTN	0.5 mg/ml in 1X TBS, pH7.3, with 0.5% BSA (US sourced) and 0.02% sodium azide	100 ug

[Bulk quote request](#)

Availability	1-3 business days
Species Reactivity	Human, Mouse, Rat
Predicted Reactivity	Dog
Format	Biotin Conjugate
Clonality	Polyclonal (goat origin)
Isotype	Goat Ig
Purity	Antigen affinity
Gene ID	6647
Applications	Western Blot : 0.2-0.5ug/ml ELISA (peptide) LOD : 1:8000
Limitations	This SOD antibody is available for research use only.



Western blot of human HEK293 cell lysate with biotinylated SOD antibody at 0.3ug/ml. Predicted molecular weight: ~16kDa. An NAP blocker was used in place of non-fat milk as blocking solution and diluent. (1)

Description

Additional name(s) for this target protein: Superoxide dismutase 1, SOD1

Application Notes

Optimal dilution of the SOD antibody should be determined by the researcher.

1. Do not use a blocking agent or diluent that contains biotin (including milk and some BSA preparations) when testing

with biotinylated antibodies. A non-animal protein (NAP) blocker is recommended.

Immunogen

Amino acids SRKHGGPKDEERH were used as the immunogen for this SOD antibody.

Storage

Aliquot and store the SOD antibody at -20oC.